

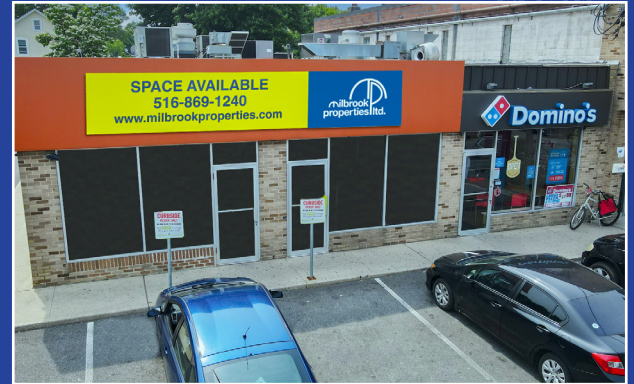


# Huntington Station, NY

Suffolk County

## Huntington Crossroads

a foundation for nearly 100 years



**Location:**

West side of New York Avenue,  
corner of President Street & West Hills Court  
1789-1805 New York Ave, Huntington  
Station, NY

**Description:**

Neighborhood Strip Center

**Major Tenants:**

Domino's, H&R Block

**GLA:**

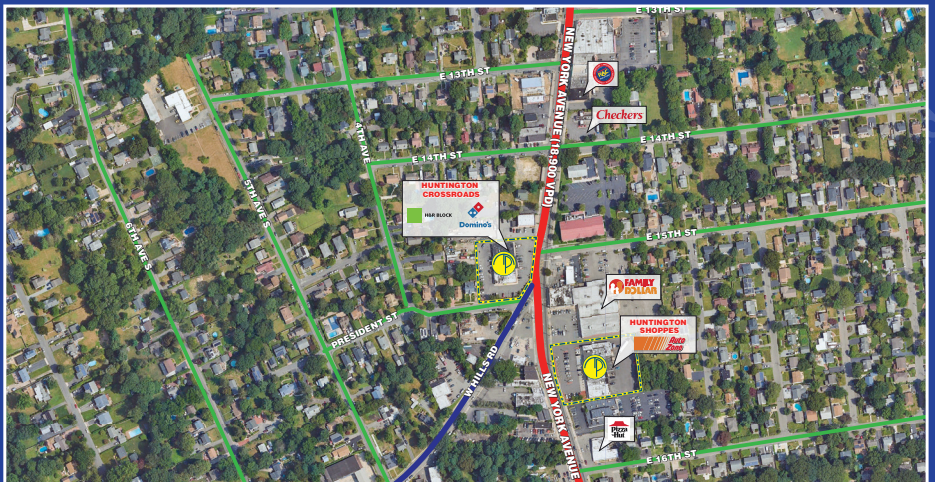
12,890 sf ±

**Parking:**

49 spaces

**Demographics:**

| 2024              | 1 Mile    | 3 Miles   | 5 Miles   |
|-------------------|-----------|-----------|-----------|
| Population        | 22,974    | 86,453    | 171,818   |
| Average HH Income | \$114,271 | \$140,505 | \$158,613 |
| Total HH          | 6,305     | 28,771    | 58,653    |
| Median Age        | 36.7      | 42.5      | 44.7      |



MILBROOK PROPERTIES LTD.  
CHARLES HIRSCH, PRESIDENT  
CHIRSCH@MILBROOKPROPERTIES.COM  
T (516) 869-1240  
F (516) 869-8576  
42 BAYVIEW AVENUE, MANHASSET, NY 11030  
WWW.MILBROOKPROPERTIES.COM

# Huntington Station, NY

## Suffolk County

### Huntington Crossroads



| Store Addr.      | Tenant                      | Dimensions               | Size            |
|------------------|-----------------------------|--------------------------|-----------------|
| <b>1st Floor</b> |                             |                          |                 |
| 1. 1789          | Tavern                      | (18'-6" x 76'-0")        | 1,311 sf        |
| 2. 1791          | Mexican Restaurant          | (18'-0" x 76'-0")        | 1,368 sf        |
| 3. 1793          | Dry Cleaners                | (17'-4" x 76'-0")        | 1,254 sf        |
| 4. 1797          | Convenience Store           | (15'-6" x 76'-0")        | 1,102 sf        |
| 5. 1795          | H&R Block                   | (15'-0" x 76'-0")        | 1,117 sf        |
| 6. 1799          | Church                      | (71'-0" x 96'-7")        | 3,838 sf        |
| 7. 1801          | Domino's                    | (17'-0" x 78'-6")        | 1,264 sf        |
| 8-9. 1803-05     | <b>Pending Availability</b> |                          |                 |
|                  | <b>2nd Gen Wet Use</b>      | <b>(31'-0" x 78'-6")</b> | <b>2,434 sf</b> |

*all store addresses are located on New York Avenue  
the above dimensions are for illustrative purposes only*



For information contact:

Charles Hirsch  
 President  
 Milbrook Properties Ltd.  
 42 Bayview Avenue  
 Manhasset, NY 11030  
 Email: [chirsch@milbrookproperties.com](mailto:chirsch@milbrookproperties.com)  
 Tel: (516) 869-1240  
 Fax: (516) 869-8576