



New York, NY

Brooklyn

2121 Westbury Court

a foundation for nearly 100 years



Location: Brooklyn: Crown Heights Section (Westbury Court and Flatbush Avenue)

Retail GLA: 5,619 sf

Residential: 66 Apartments

Demographics:

2024	.5 Mile	1 Mile	3 Mile
Population	74,792	149,584	1,345,247
Average HH Income	\$72,910	\$79,413	\$80,009
Total HH	30,027	60,053	503,074
Median Age	38.6	37.2	35.1



MILBROOK PROPERTIES LTD.
 CHARLES HIRSCH, PRESIDENT
 CHIRSCH@MILBROOKPROPERTIES.COM
 T (516) 869-1240
 F (516) 869-8576
 42 BAYVIEW AVENUE, MANHASSET, NY 11030
 WWW.MILBROOKPROPERTIES.COM

New York City Brooklyn

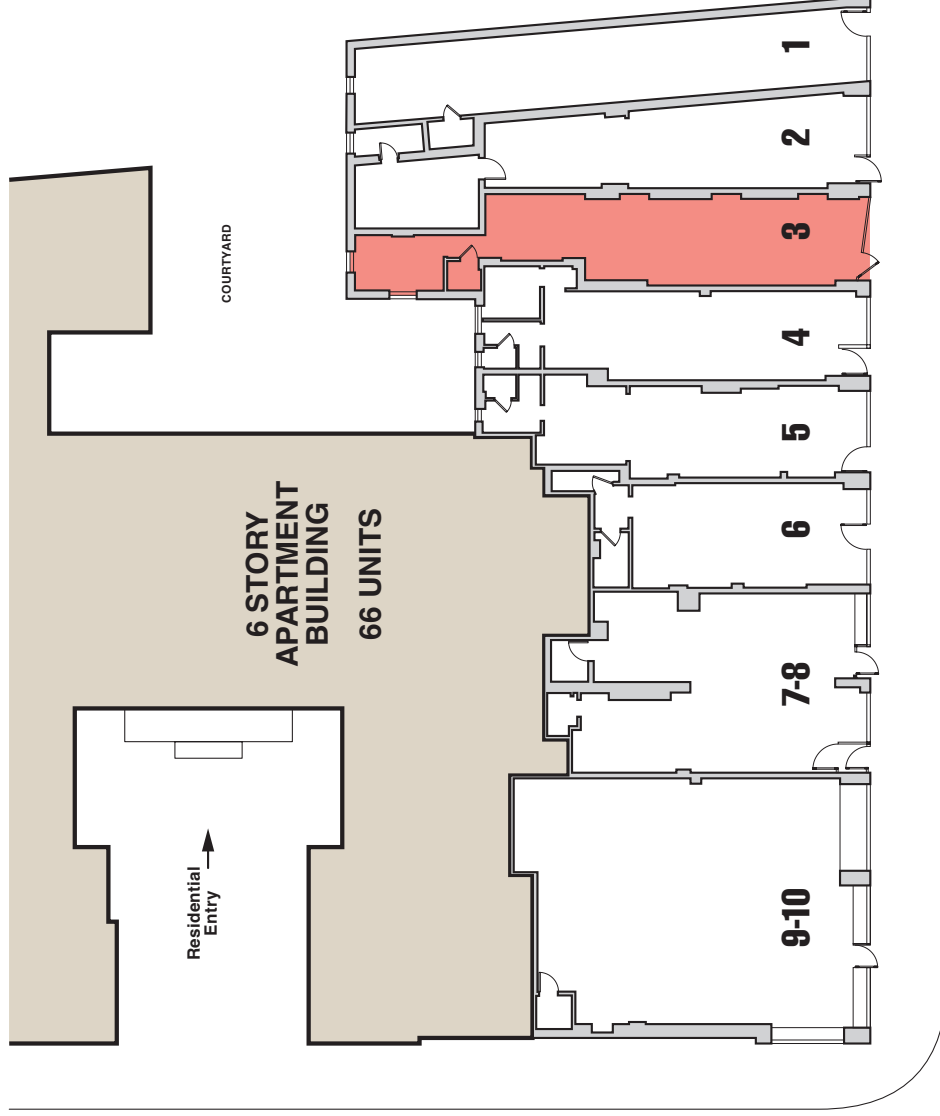
2121 Westbury Court



Store	Addr.	Tenant
1.	662	Barber
2.	664	Cupcakes
3.	666	Available
4.	668	Salad Bar
5.	668A	Tailor
6.	670	Ladies Boutique
7-8.	672-674	Human Hair
9-10.	676	American Restaurant

Size
684 sf
676 sf
629 sf
544 sf
515 sf
462 sf
813 sf
1,296 sf + bsmt

all store addresses are located on Flatbush Avenue



For information contact:

Charles Hirsch

President

Milbrook Properties Ltd.

42 Bayview Avenue

Manhasset, NY 11030

Email: chirsch@milbrookproperties.com

Tel: (516) 869-1240

Fax: (516) 869-8576

FLATBUSH AVENUE