

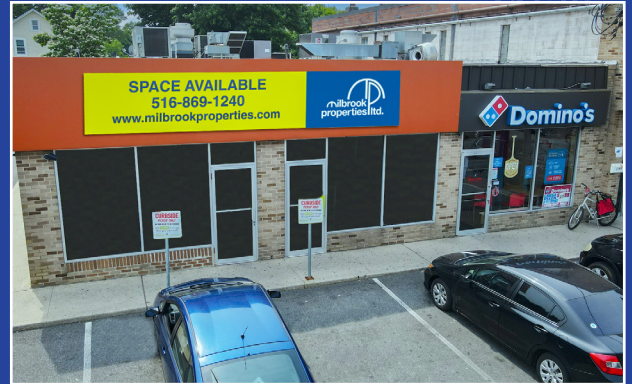


Huntington Station, NY

Suffolk County

Huntington Crossroads

a foundation for nearly 100 years



Location:

West side of New York Avenue,
corner of President Street & West Hills Court
1789-1805 New York Ave, Huntington
Station, NY

Description:

Neighborhood Strip Center

Major Tenants:

Domino's, H&R Block

GLA:

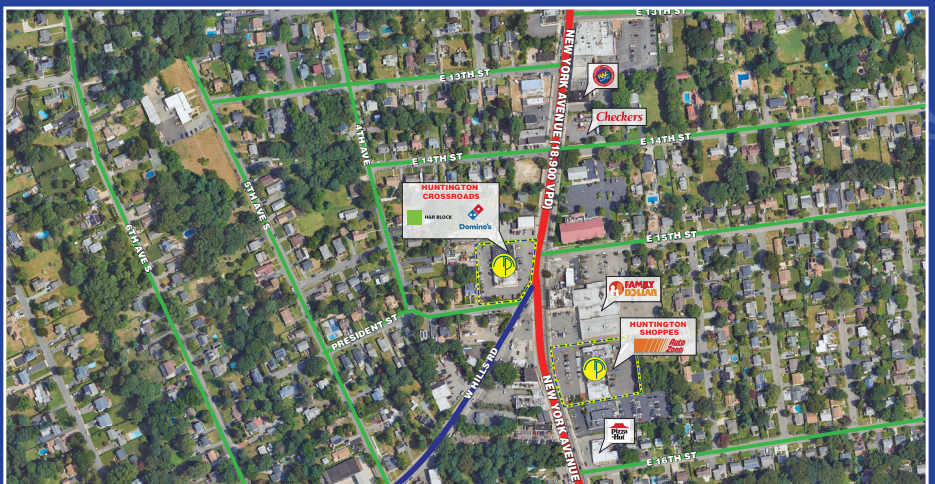
12,890 sf ±

Parking:

49 spaces

Demographics:

2024	1 Mile	3 Miles	5 Miles
Population	22,974	86,453	171,818
Average HH Income	\$114,271	\$140,505	\$158,613
Total HH	6,305	28,771	58,653
Median Age	36.7	42.5	44.7



MILBROOK PROPERTIES LTD.

CHARLES HIRSCH, PRESIDENT

CHIRSCH@MILBROOKPROPERTIES.COM

T (516) 869-1240

F (516) 869-8576

42 BAYVIEW AVENUE, MANHASSET, NY 11030

WWW.MILBROOKPROPERTIES.COM

Huntington Station, NY

Suffolk County

Huntington Crossroads



Store Addr.	Tenant	Dimensions	Size
1st Floor			
1. 1789	Tavern	(18'-6" x 76'-0")	1,311 sf
2. 1791	Fish Restaurant	(18'-0" x 76'-0")	1,368 sf
3. 1793	Dry Cleaners	(17'-4" x 76'-0")	1,254 sf
4. 1797	Convenience Store	(15'-6" x 76'-0")	1,102 sf
5. 1795	H&R Block	(15'-0" x 76'-0")	1,117 sf
6. 1799	Church	(71'-0" x 96'-7")	3,838 sf
7. 1801	Domino's	(17'-0" x 78'-6")	1,264 sf
8-9. 1803-05	Pending Availability		
	2nd Gen Wet Use	(31'-0" x 78'-6")	2,434 sf

*all store addresses are located on New York Avenue
the above dimensions are for illustrative purposes only*



For information contact:

Charles Hirsch
 President
 Milbrook Properties Ltd.
 42 Bayview Avenue
 Manhasset, NY 11030
 Email: chirsch@milbrookproperties.com
 Tel: (516) 869-1240
 Fax: (516) 869-8576