



Edison, NJ

Middlesex County

Edison Plaza

a foundation for nearly 100 years



Location: NW Corner of US Hwy Rte 1 and Old Post Rd, 775 Route One South, Edison, NJ

Description: Grocery Anchored Shopping Center

Major Tenants: ShopRite Supermarket, Monster Golf, Capital One Bank, Plato's Closet, Subway

GLA: 104,082 sf ±

Parking: 521 spaces

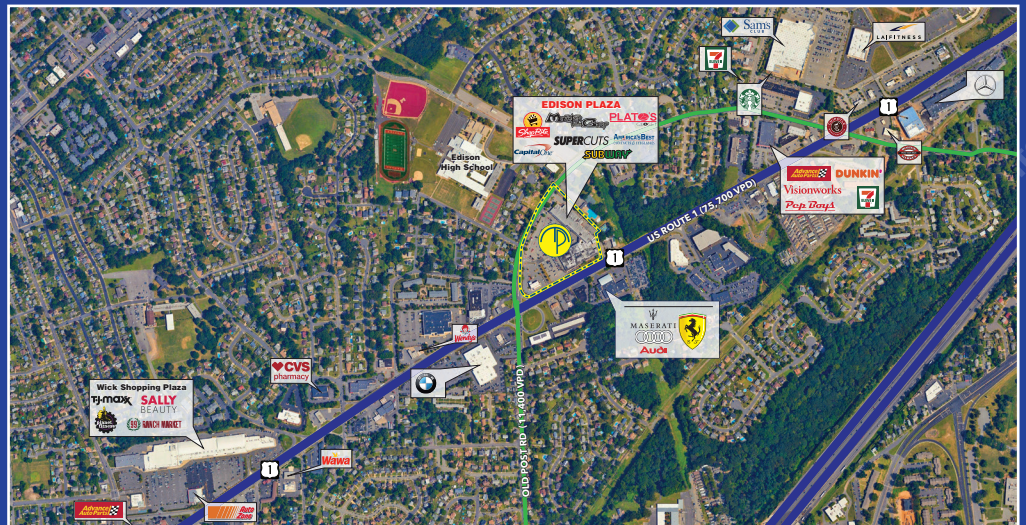
Demographics:

2024	1 Mile	3 Miles	5 Miles
Population	17,847	100,862	295,293
Average HH Income	\$85,489	\$106,958	\$100,657
Total HH	6,645	35,958	98,741
Median Age	40.9	38.3	36.1



MILBROOK PROPERTIES LTD.
 CHARLES HIRSCH, PRESIDENT
 CHIRSCH@MILBROOKPROPERTIES.COM
 T (516) 869-1240
 F (516) 869-8576

42 BAYVIEW AVENUE, MANHASSET, NY 11030
 WWW.MILBROOKPROPERTIES.COM



Edison, NJ

Middlesex County

Edison Plaza



Store	Tenant	Dimensions	Size
1.	ShopRite	(332'-0" x 175'-6" irr.)	62,346 sf
1A.	ShopRite Pharmacy	(85'-0" x 96'-3")	1,700 sf
2.	Noodles+ Restaurant	(20'-0" x 85'-0")	1,720 sf
3.	Super Cuts	(20'-0" x 85'-0")	1,300 sf
4A.	Taco Restaurant	(15'-3" x 85'-0")	2,100 sf
4B.	Nail Salon	(24'-9" x 85'-0")	3,159 sf
5.	Plato's Closet	(26'-0" x 127'-0" irr.)	2,816 sf
6.	Asian Desserts	(23'-9" x 127'-0" irr.)	750 sf
7.	Subway	(16'-0" x 51'-3")	9,669 sf
8.	Liquor Land	(66'-0" x 141'-0" irr.)	9,936 sf
9-10.	Monster Golf	(72'-0" x 141'-0" irr.)	2,500 sf
11.	Noodle House Restaurant	(21'-9" x 129'-9")	3,000 sf
12.	Dental Center	(30'-6" x 100'-0")	3,000 sf
13.	Ambest Contacts & Eyewear	(30'-0" x 100'-0")	5,000 sf
PAD A.	Capital One Bank		

the above dimensions are for illustrative purposes only.

For information contact:

Charles Hirsch
 President
 Milbrook Properties Ltd.
 42 Bayview Avenue
 Manhasset, NY 11030
 Email: chirsch@milbrookproperties.com
 Tel: (516) 869-1240
 Fax: (516) 869-8576

