



West Caldwell, NJ

Essex County

Essex Mall

a foundation for nearly 100 years



Location:

Located at 875-975 Bloomfield Ave. Six ways of ingress/egress, including signalized intersection along Bloomfield Ave., Clinton Rd. and Kirkpatrick Ln.

Description:

Grocery Anchored Retail Center

Major Tenants:

Stop & Shop, AERA Vet ER, Marshalls, Popeyes, USA Twisterz, , PNC Bank, Orange Theory Fitness

GLA:

±189,773 sf

Parking:

977 spaces

Demographics:

	2024	1 Mile	3 Miles	5 Miles
Population		5,461	54,061	174,386
Average HH Income		\$120,564	\$130,589	\$137,669
Total HH		2,363	20,511	65,351
Median Age		47.5	45.4	45.6



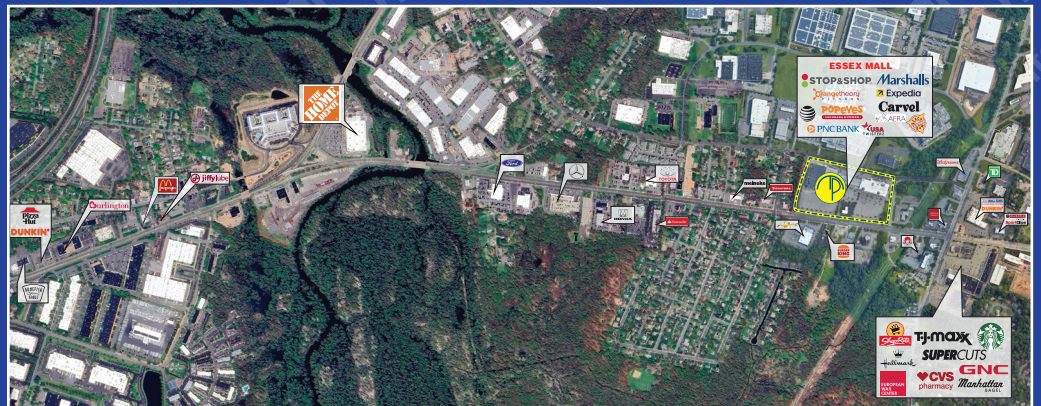
MILBROOK PROPERTIES LTD.
 CHARLES HIRSCH, PRESIDENT
 CHIRSCH@MILBROOKPROPERTIES.COM

T (516) 869-1240

F (516) 869-8576

42 BAYVIEW AVENUE, MANHASSET, NY 11030

WWW.MILBROOKPROPERTIES.COM



West Caldwell, NJ

Essex County

Essex Mall



BLOOMFIELD AVENUE

Store	Addr.	Tenant	Size	Store	Addr.	Tenant	Size
1.	975	AERA Vet ER	45,000 sf	11.	893	Asian Delite	2,800 sf
2.	911	USA Twisterz	15,675 sf	12.	891	Bromilow Chocolate	1,200 sf
3.	901	Marshalls	39,557 sf	13.	889	West Essex Jeweler	1,600 sf
4.	907	Franco's Pizza	4,000 sf	14.	887	Carvel	1,200 sf
5.	905B	Dentist	2,500 sf	15.	885	Expedia	1,200 sf
6.	905A	Easy Peasy Kids Kutz	1,500 sf	16.	883	AT&T	1,600 sf
7.	903	Beach Bum Tanning	3,200 sf	17.	881	Nail Salon	1,600 sf
8.	897	Juice Bar	3,200 sf	18.	875	Stop & Shop	57,645 sf
9./10.	895/6	Orange Theory Fitness	3,200 sf	19.	909	PNC Bank	3,096 sf
				20.	909a	Available	+3,000 sf
						Popeyes - In Permitting	

For information contact:

Charles Hirsch
President

Milbrook Properties Ltd.

42 Bayview Avenue
Manhasset, NY 11030

Email: chirsch@milbrookproperties.com

Tel: (516) 869-1240

Fax: (516) 869-8576